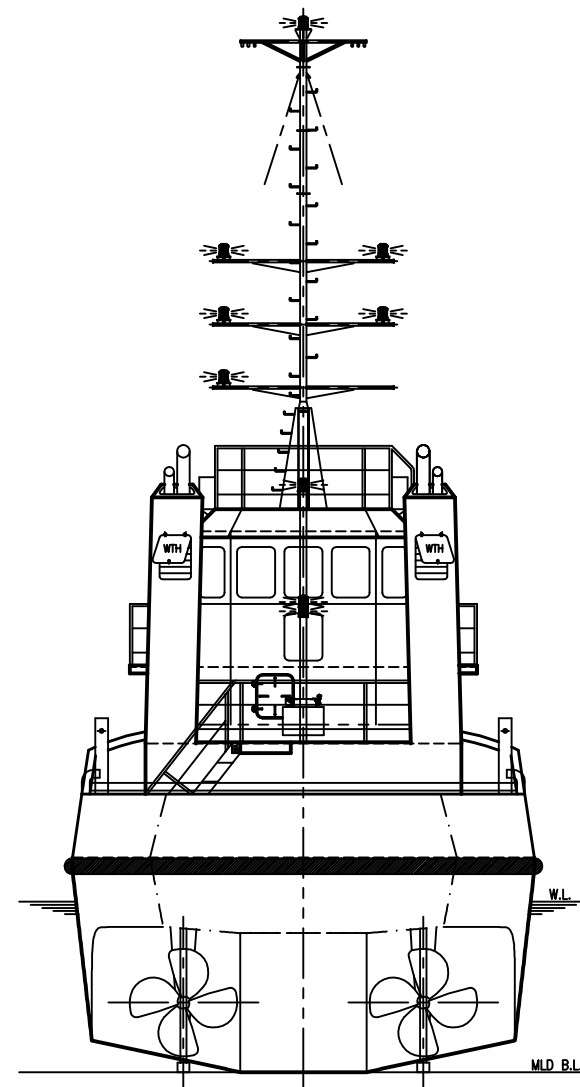
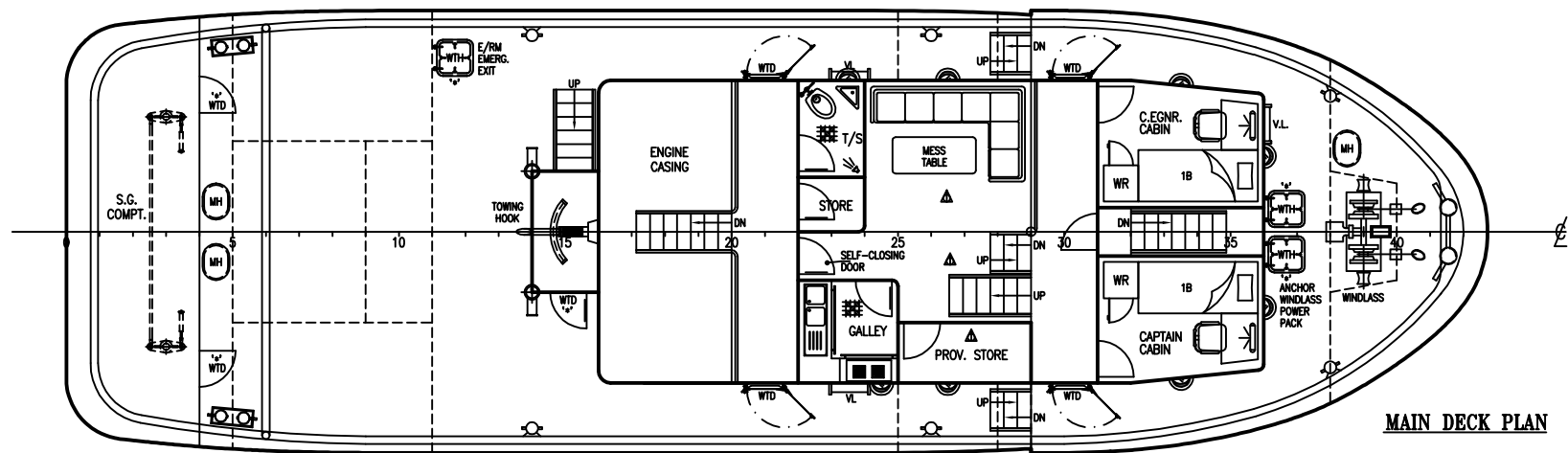


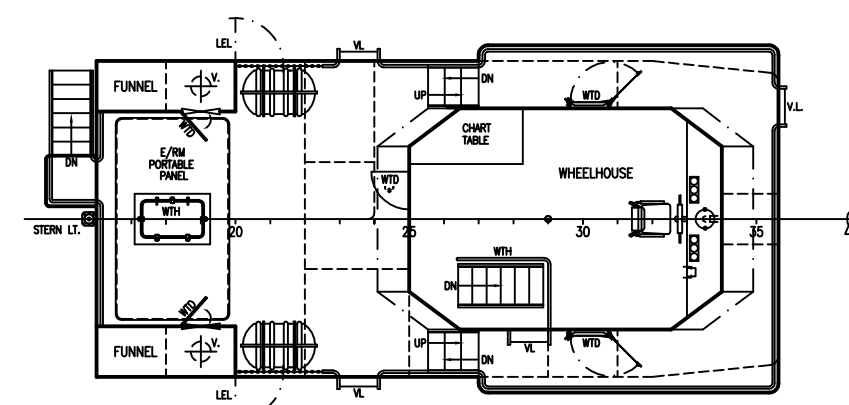
SIDE PROFILE



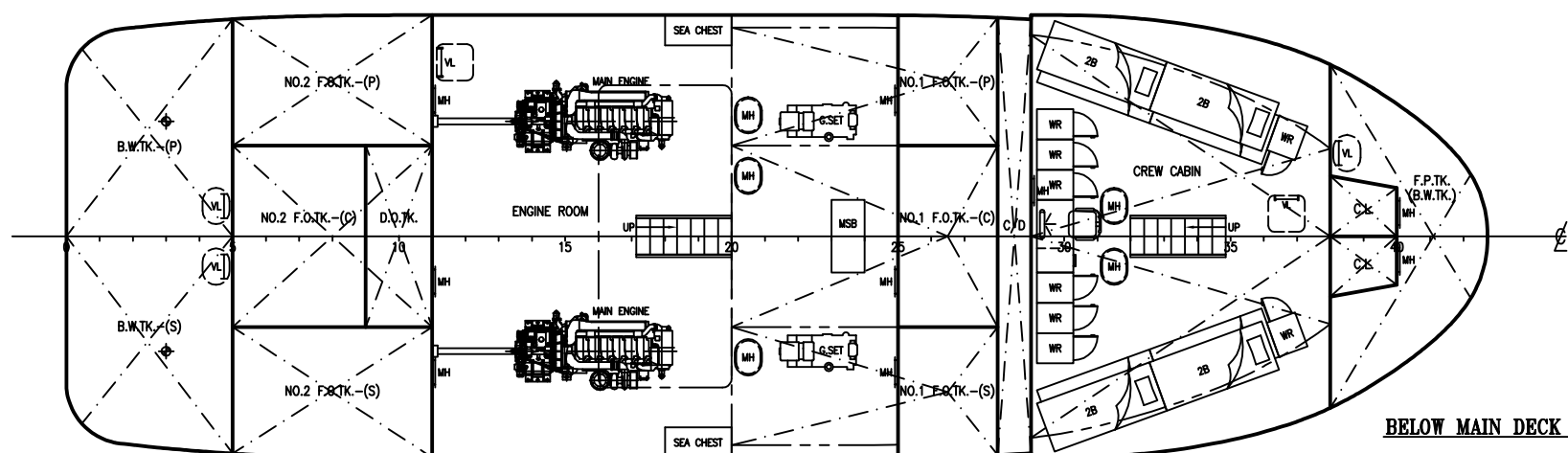
STERN VIEW



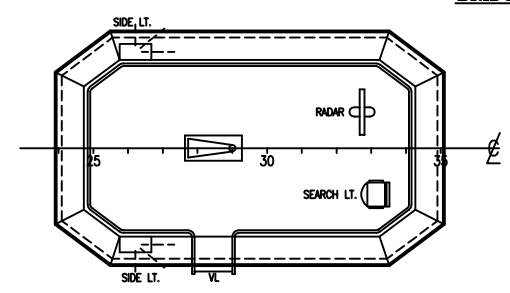
MAIN DECK PLAN



BRIDGE DECK PLAN



BELOW MAIN DECK PLAN



WHEELHOUSE TOP

- NOTES:-
- [A] ▲ TOP OF F.O.T.K. TO BE COATED WITH INCOMBUSTIBLE COVERING OF 38MM AND OVER IN THICKNESS.
 - [B] * * TO BE KEPT CLOSED AT THE SEA AND A PERMANENT NOTICE TO THIS EFFECT SHALL BE POSTED ON EITHER SIDE OF THE DOOR.
 - [C] SIDE SCUTTLERS ARE TO BE FITTED WITH EFFICIENT, HINGED INSIDE DEADLIGHTS.
- WTD = WEATHER TIGHT DOOR
 WTH = WEATHER TIGHT HATCH

PRINCIPAL PARTICULARS

L.O.A.	23.500M (77.10FT)
L.W.L.	22.856M (74.99FT)
L.B.P.	21.322M (69.95FT)
BREADTH MOULDED	7.315M (24.00FT)
DEPTH MOULDED	3.200M (10.50FT)
DESIGN DRAFT	2.700M (8.86FT)
	(SUBJECT TO FREEBOARD ASSIGNMENT)
COMPLEMENT	10 MEN
DESIGN SPEED	10 KNOTS
F.O. CAPACITY	81 TONS (APPROX.)
F.W. CAPACITY	29 TONS (APPROX.)
B.W. CAPACITY	37 TONS (APPROX.)
MAIN ENGINE	YANMAR 6AYM-STE
	650HP@1900RPM x 2 UNITS
GEAR BOX	YXH240L, RATIO 5.91:1
GENERATOR	28KW x 2 UNITS
NAVIGATION AREA	INTERNATIONAL
PORT OF REGISTRY	SINGAPORE
FLAG	SINGAPORE

DATE	MODIFICATION	REV	BY
SHIP			
23M TUG BOAT			
TITLE			
GENERAL ARRANGEMENT			
OWNER			
BUILDER			
CLASS	NK		YD NO.
DRAWN	CHECKED	APPROVED	SCALE
			DRAWING NO.
1 : 60			